



GAT MONTHLY MEMBERSHIP PROGRESS REPORT

Results as of: 5/31/2023

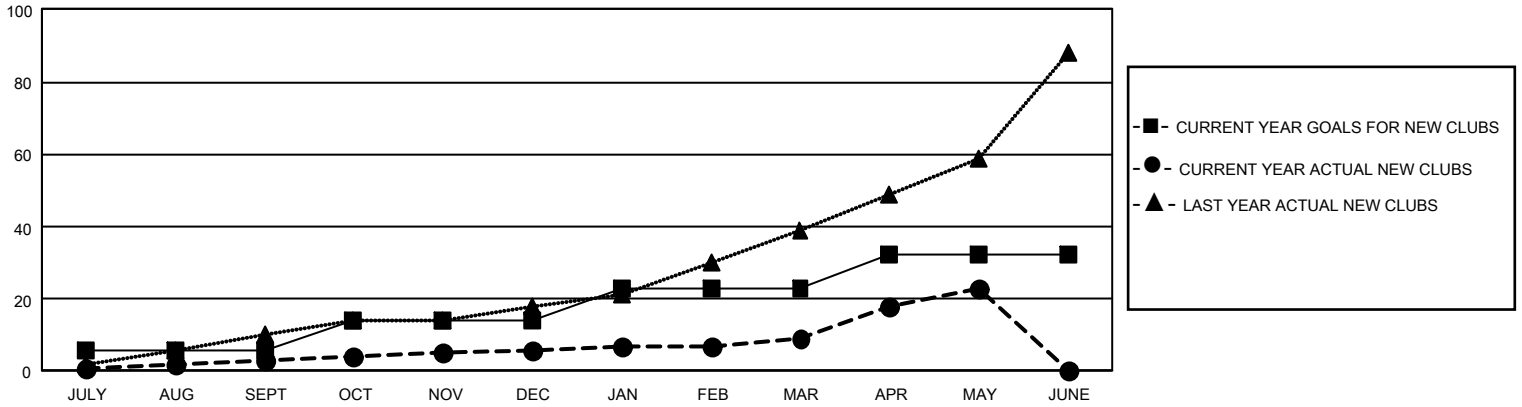
GMT Constitutional Area 5 - E, Group O

REPORT DOES NOT INCLUDE CLUBS IN UNDISTRICTED AREAS.

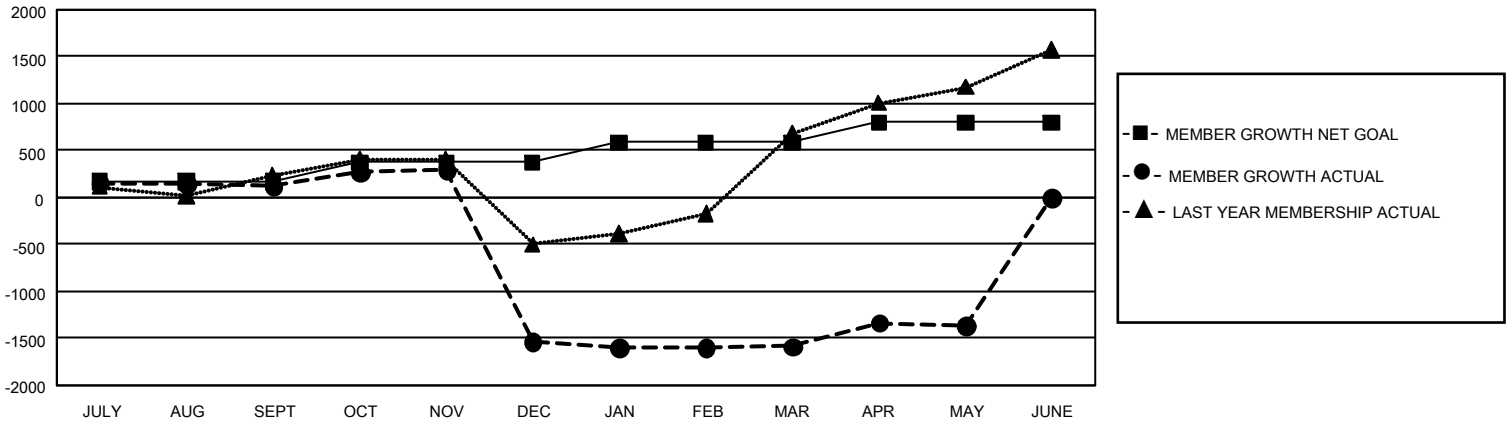
Clubs			
RESULTS FOR 2022-2023			
QUARTER	NEW CLUB GOAL	NEW CLUBS	DROPPED CLUBS
JULY/AUG/SEPT	18	3	3
OCT/NOV/DEC	24	3	40
JAN/FEB/MAR	27	3	9
APR/MAY/JUNE	27	14	2

Members			
RESULTS FOR 2022-2023			
QUARTER	MEMBER GROWTH NET GOAL	MEMBER GROWTH ACTUAL	DROPPED MEMBERS ACTUAL (including transfers)
JULY/AUG/SEPT	172	1,020	705
OCT/NOV/DEC	200	595	2,217
JAN/FEB/MAR	215	750	599
APR/MAY/JUNE	212	905	487

GOALS AND ACTUAL NEW CLUBS CUMULATIVE



GOALS AND ACTUAL MEMBERS CUMULATIVE



DROPPED CLUBS: 54	334 CLUBS OF 569 ADDED 1 OR MORE NEW MEMBERS	<u>GENDER DISTRIBUTION</u>	
		MALE 8,935 (48.61%)	FEMALE 9,439 (51.35%)
<u>DROPPED MEMBERS</u>		NON BINARY 0 (0.00%)	PREFER NOT TO ANSWER 6 (0.03%)
DECEASED 72	CLICK HERE FOR CUMULATIVE MEMBERSHIP DATA	TOTAL FAMILY UNIT MEMBERS 7,362	
CLUB CANCELLED 1,769		FAMILY MEMBERS PAYING HALF DUES 4,661	
OTHER 2,167			
TOTAL 4,008			